

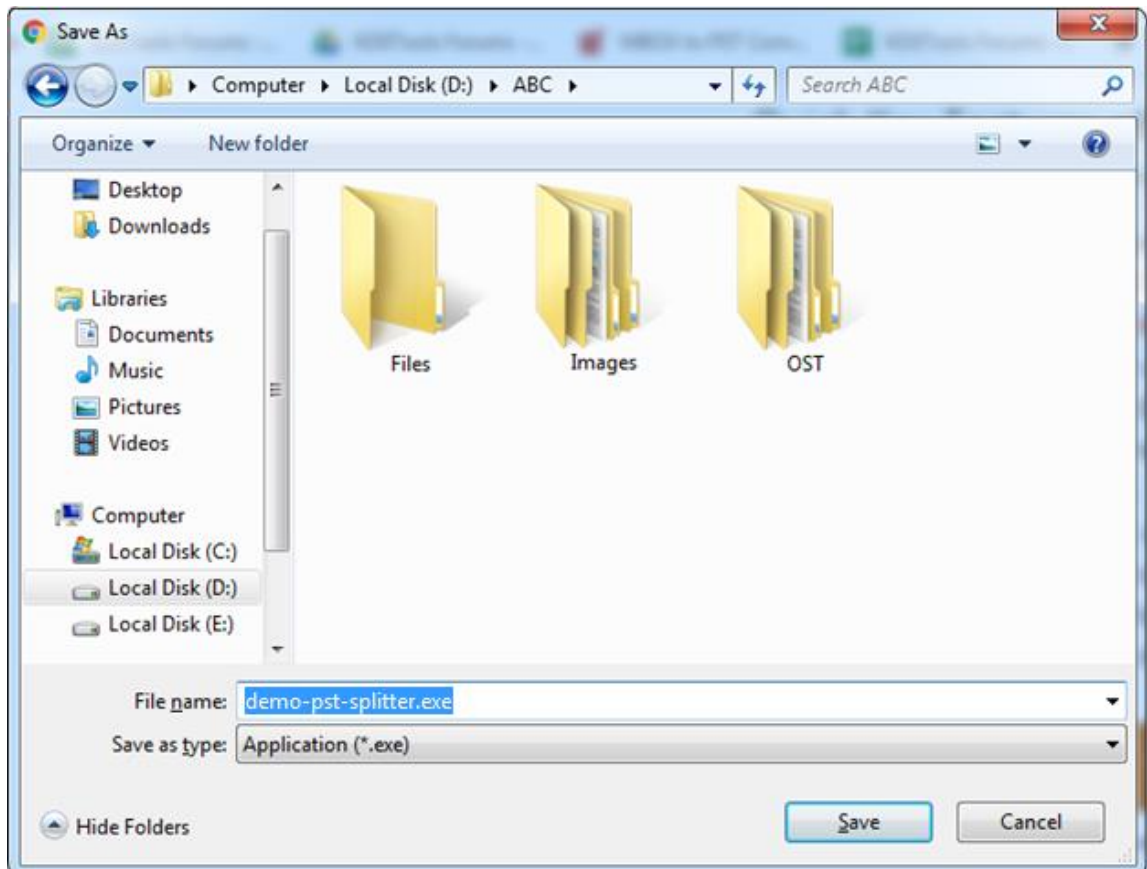


KDETools

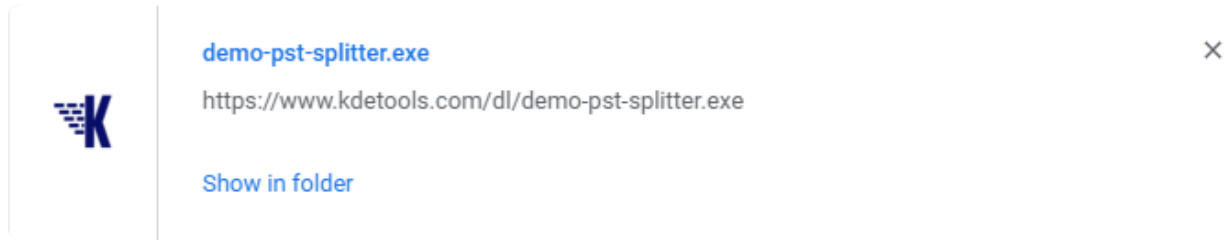
PST Splitter

Step to Install

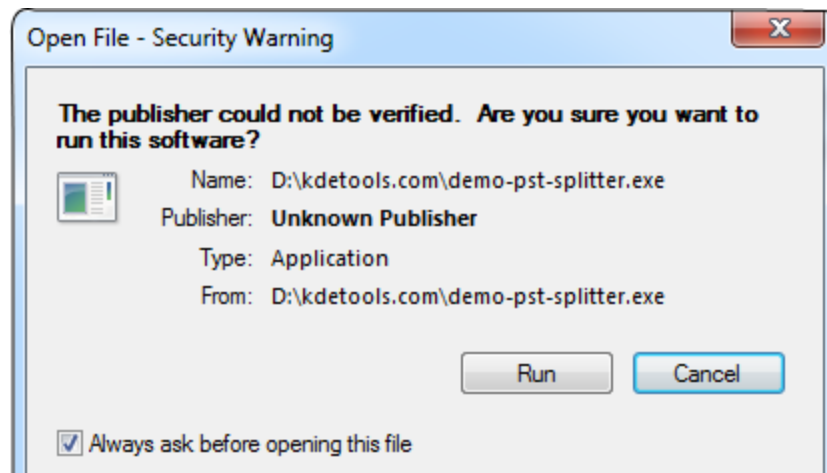
1. When Opening Dialog Box Appears Click **Save File**.



2. When Downloads Windows Appears open a file in a **folder**.



3. When Security Warning Dialog Box Appears, **Click Run**.



System Requirements:

Support	:	Windows 2000, 2003, 2008, XP, Vista, Windows 7/8/8.1, 2008/2012, Windows 10 (32-bit & 64-bit)
Processor	:	1 GHz processor (2.4 GHz is recommended)
RAM	:	500 MB of RAM (1 GB is recommended)
Hard Disk Space	:	Minimum 100 MB for installation is required